

VLRs

FOR INCLUSIVE
FUTURES



HOW CAN WE ENSURE THAT VLRS ARE TRULY INCLUSIVE?



01

Cities are composed of diverse groups, each with different needs and perspectives. For decision-makers to implement effective actions, they must understand the full demographic landscape of their city to ensure that VLRs are genuinely representative.

02

Currently, VLRs often lack transparency in their stakeholder engagement processes. This lack of clarity can lead to the underrepresentation of certain groups, diminishing the effectiveness of the initiatives derived from these reviews.

03

To address this, we need to tailor the VLR process to the specific needs of different community groups by developing customized facilitator guidelines. These guidelines will ensure that all voices are heard and considered, fostering a more inclusive approach to local development.

QUANTITATIVE GAPS IN REPORTING PARTICIPATION

Many VLRs lack numeric data on participation, providing general descriptions of engagement without specific figures.

STAKEHOLDER ENGAGEMENT PRACTICES

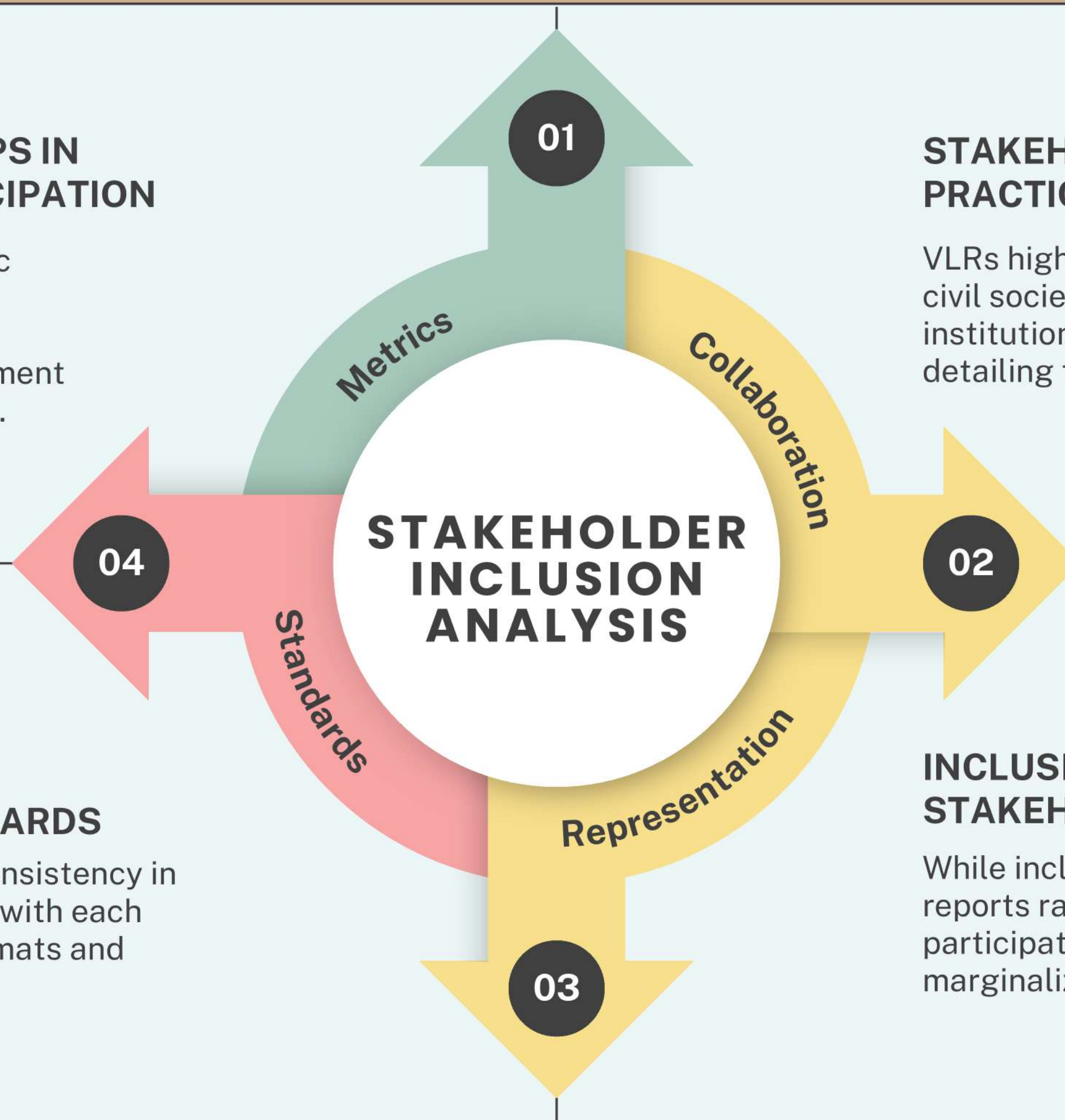
VLRs highlight efforts to involve civil society, local organizations, and institutions, though often without detailing the scale of participation.

CONSISTENCY IN REPORTING STANDARDS

There is significant inconsistency in reporting participation, with each VLR using different formats and levels of detail.

INCLUSIVITY EFFORTS IN STAKEHOLDER REPRESENTATION

While inclusivity is a common theme, reports rarely quantify the participation of youth, women, or marginalized groups.



OUR PROPOSAL FOCUSES ON



ENHANCING TRANSPARENCY

Making stakeholder engagement processes open, accessible, and clear, ensuring all groups have a voice in shaping the VLR.

STANDARDS



DEMOGRAPHIC UNDERSTANDING

Conducting in-depth analysis of city demographics to identify diverse groups and ensure their inclusion in decision-making and reporting.

ANALYSIS



SDG FILTERING

Assessing which SDG benefit or impact specific groups, ensuring that the VLR aligns with their priorities and needs.

FILTER



TAILORED FACILITATION

Developing facilitator guidelines customized to the unique needs of specific community groups, fostering meaningful participation and representation.

GUIDELINE

TAILORED VLR FACILITATION GUIDELINES

GENDER

CHILDREN & YOUTH

Require engaging, accessible language and interactive methods that cater to their developmental stages and encourage active participation.

PERSONS WITH DISABILITIES

Need accommodations like sign language interpretation, assistive technologies, and barrier-free spaces to ensure equitable participation.

OLDER PEOPLE

May require slower-paced facilitation, larger print materials, and more time to process information due to potential sensory or mobility limitations.

MINORITIES
